

m o o o i

Monster Chair

MARCEL WANDERS



A soft, puffy and stylish chair as symbol of the eternal battle between opposite forces that take place in life and can be easily recognized inside ourselves, if we have the courage to open our eyes. Scary? Not at all! You forget all about the monster once you sit down and enjoy the chair's comfort and softness. The signature version, the fearless leader of our Monster family, comes upholstered in Moooi Original Black Synthetic Leather with an embroidered face.

Detailing



The Monster Chair is available in more than 200 fabrics.

Monster Chair Diamond Arms

Dimensions

56cm | 22.0"



40cm | 15.7"



50cm | 19.7"



80cm | 32.5"

Product

WIDTH 56cm | 22"

HEIGHT 80cm | 31.5"

DEPTH 40cm | 15.7"

Packaging

WIDTH 58cm | 22.8"

HEIGHT 88cm | 34.6"

CUBAGE 0.32m³ | 11.27ft³

LENGTH 62.5cm | 24.6"

WEIGHT 13.5cm | 29.76lbs

Technical

MATERIAL

Steel frame, foam.

SEAT DEPTH

40cm | 15.7"

SEAT HEIGHT

51cm | 20.1"

SEAT WIDTH

42cm | 16.5"

Monster Chair Diamond No Arms

Dimensions

42cm | 16.5"



40cm | 15.7"



50cm | 19.7"



80cm | 32.5"

Product

WIDTH 42cm | 16.5"

HEIGHT 80cm | 31.5"

DEPTH 40cm | 15.7"

Packaging

WIDTH 58cm | 22.8"

HEIGHT 88cm | 34.6"

CUBAGE 0.32m³ | 11.27ft³

LENGTH 62.5cm | 24.6"

WEIGHT 13.5cm | 29.76lbs

Technical

MATERIAL

Steel frame, foam.

SEAT DEPTH

40cm | 15.7"

SEAT HEIGHT

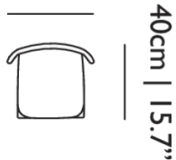
51cm | 20.1"

SEAT WIDTH
42cm | 16.5"

Monster Chair Naked Arms

Dimensions

56cm | 22.0"



Product

WIDTH 56cm | 22"
HEIGHT 80cm | 31.5"
DEPTH 40cm | 15.7"

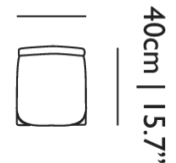
Packaging

WIDTH 58cm | 22.8"
HEIGHT 88cm | 34.6"
CUBAGE 0.32m³ | 11.27ft³
LENGTH 62.5cm | 24.6"
WEIGHT 13.5cm | 29.76lbs

Monster Chair Naked No Arms

Dimensions

42cm | 16.5"



Product

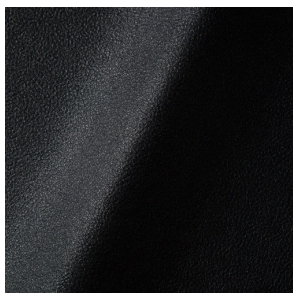
WIDTH 42cm | 16.5"
HEIGHT 80cm | 31.5"
DEPTH 40cm | 15.7"

Packaging

WIDTH 58cm | 22.8"
HEIGHT 88cm | 34.6"
CUBAGE 0.32m³ | 11.27ft³
LENGTH 62.5cm | 24.6"
WEIGHT 13.5cm | 29.76lbs

Upholstery

ABBRACCI (available in 5 colours)



COMPOSITION

100% PES

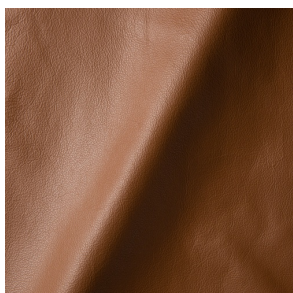
ABRASION

30000 martindale
lightfastness 3 - 4
pilling 5

FIRETEST

BS5852 part 1 on request
US. Cal. Bull. 117-2013

ARREDO (available in 2 colours)



BOUCLE (available in 4 colours)



COMPOSITION

43% CO, 14% PA, 12% CV,
3% PES, 28% PAN

ABRASION

20000 martindale
lightfastness 4 - 6
pilling 4 - 5

FIRETEST

BS5852 part 1 on request

BYRAM (available in 19 colours)



COMPOSITION

100% WM

ABRASION

70000 martindale
lightfastness 4 - 5
pilling 4

FIRETEST

BS5852 part 1
US. Cal. Bull. 117-2013

CANVAS 2 (available in 45 colours)



COMPOSITION

90% WO, 10% PA

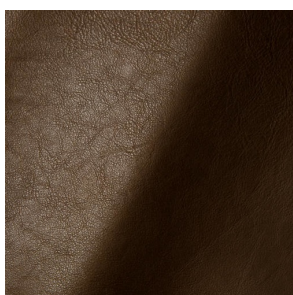
ABRASION

100000 martindale
lightfastness 6
pilling 4

FIRETEST

BS5852 part 1 on request
US. Cal. Bull. 117-2013

CERVINO (available in 4 colours)



COMPOSITION

100% CO

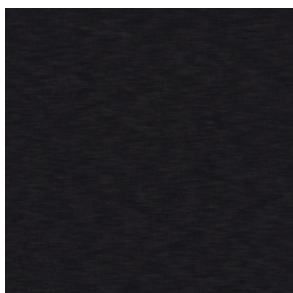
ABRASION

70000 martindale
lightfastness 4
pilling 3 - 4

FIRETEST

BS5852 part 1 on request
US. Cal. Bull. 117-2013

DENIM (available in 3 colours)



COMPOSITION

100% WO

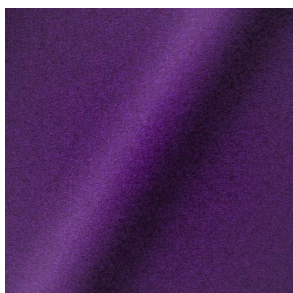
ABRASION

45000 martindale
lightfastness 7
pilling 3

FIRETEST

BS5852 part 1 on request
US. Cal. Bull. 117-2013

DIVINA 3 (available in 56 colours)



DIVINA MD (available in 27 colours)



COMPOSITION

100% WO

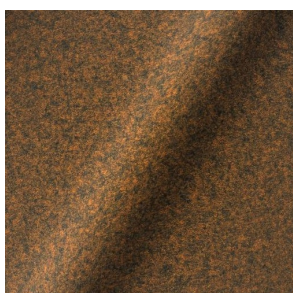
ABRASION

45000 martindale
lightfastness 6
pilling 3

FIRETEST

BS5852 part 1 on request
US. Cal. Bull. 117-2013

DIVINA MELANGE 3 (available in 60 colours)



COMPOSITION

100% WO

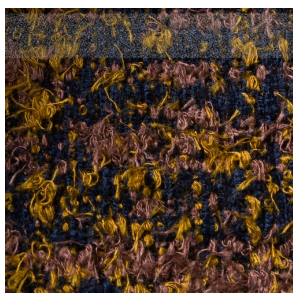
ABRASION

45000 martindale
lightfastness 6 - 7
pilling 3

FIRETEST

BS5852 part 1 on request
US. Cal. Bull. 117-2013

Bearded Leopard (available in 1 colours)



COMPOSITION

77% CV, 15% PES, 7% CO,
1% PA

ABRASION

15000 martindale
lightfastness 4 - 6
pilling 4

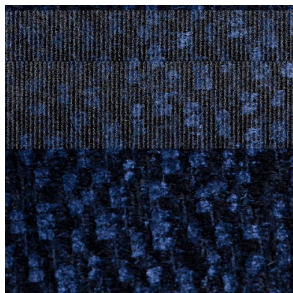
FIRETEST

BS5852 part 1 on request
US. Cal. Bull. 117-2013

Bison (available in 1 colours)



Armoured Boar (available in 1 colours)



COMPOSITION

64% CV, 21% PES, 15%
CO

ABRASION

50000 martindale
lightfastness 4 - 6
pilling 5

FIRETEST

BS5852 part 1 on request
US. Cal. Bull. 117-2013

Dodo Pavone (available in 1 colours)



COMPOSITION

12% CO, 88% PES

ABRASION

40000 martindale
lightfastness 5
pilling 4 - 5

FIRETEST

BS5852 part 1 on request
US. Cal. Bull. 117-2013

Menagerie of Extinct Animals (available in 1 colours)



COMPOSITION

100% PES

ABRASION

50000 martindale
lightfastness 4 - 6
pilling 5

FIRETEST

BS5852 part 1 on request
US. Cal. Bull. 117-2013

Blushing Sloth Melange Mohair (available in 1 colours)



COMPOSITION

85% WV, 15% WM

ABRASION

15000 martindale
lightfastness 4 - 6
pilling 2 - 3

FIRETEST

BS5852 part 1 on request
US. Cal. Bull. 117-2013

Blushing Sloth Woolly Mohair (available in 1 colours)



COMPOSITION

24% PES, 15% PA, 8% CO,
24% WM, 29% WV

ABRASION

40000 martindale
lightfastness 4 - 6
pilling 3 - 4

FIRETEST

BS5852 part 1 on request
US. Cal. Bull. 117-2013

FIORD (available in 27 colours)

COMPOSITION

92% WV, 8% PA

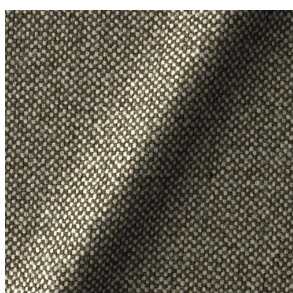
ABRASION

60000 martindale
lightfastness 6
pilling 4 - 5

FIRETEST

BS5852 part 1 on request
US. Cal. Bull. 117-2013

HALLINGDAL 65 (available in 58 colours)



COMPOSITION

30% CV, 70% WV

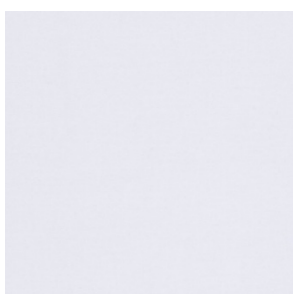
ABRASION

100000 martindale
lightfastness 7
pilling 3 - 4

FIRETEST

BS5852 part 1

HARALD 3 (available in 30 colours)



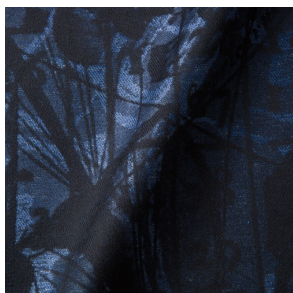
COMPOSITION

100% CO

ABRASION

100000 martindale
lightfastness 5
pilling 4 - 5

JACQUARD, ANDAZ (available in 1 colours)



COMPOSITION

34% CO, 30% CV, 24%
LI, 12% PA

ABRASION

25000 martindale
lightfastness 4 - 6
pilling 4 - 5

FIRETEST

BS5852 part 1 on request
US. Cal. Bull. 117-2013

JACQUARD, FRESC (available in 1 colours)



COMPOSITION

52% CV, 38% CO, 10% LI

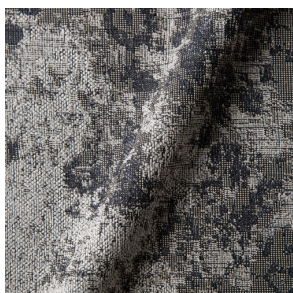
ABRASION

15000 martindale
lightfastness 3 - 4
pilling 2 - 3

FIRETEST

BS5852 part 1 on request
US. Cal. Bull. 117-2013

JACQUARD, OLD (available in 2 colours)



COMPOSITION

52% CV, 38% CO, 10% LI

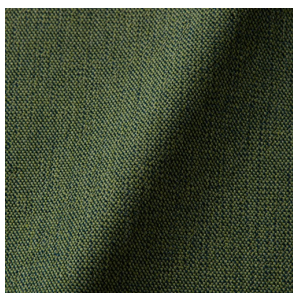
ABRASION

15000 martindale
lightfastness 3 - 4
pilling 2 - 3

FIRETEST

BS5852 part 1 on request
US. Cal. Bull. 117-2013

JUSTO (available in 10 colours)



COMPOSITION

15% CO, 35% PC, 10% PA,
40% CV

ABRASION

50000 martindale
lightfastness 5
pilling 4

FIRETEST

BS5852 part 1 on request
US. Cal. Bull. 117-2013

LISCIO (available in 11 colours)

COMPOSITION

35% WO, 35% CV, 21%
CO, 9% PA

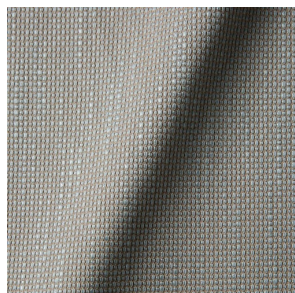
ABRASION

30000 martindale
lightfastness 4 - 6
pilling 4

FIRETEST

BS5852 part 1 on request
US. Cal. Bull. 117-2013

MACCHEDIL GREZZO (available in 10 colours)



COMPOSITION

47% CO, 20% CV, 18%
PA, 8% LI, 5% PC

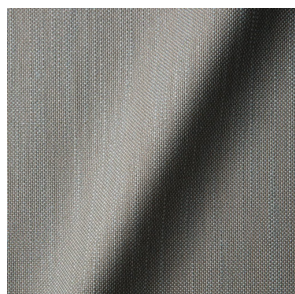
ABRASION

15000 martindale
lightfastness 3 - 5
pilling 4 - 5

FIRETEST

BS5852 part 1 on request

MACCHEDIL SOTTILE (available in 10 colours)



COMPOSITION

49% CV, 24% PES, 21% LI,
6% CO

ABRASION

20000 martindale
lightfastness 3 - 5
pilling 2 - 3

FIRETEST

BS5852 part 1 on request

MERIT (available in 43 colours)

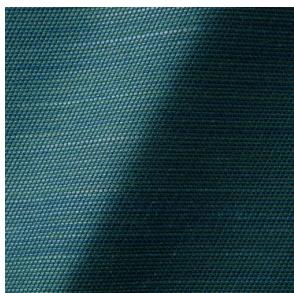
COMPOSITION

24% PES, 76%

ABRASION

85000 martindale
lightfastness 7
pilling 4

ORAY RAY (available in 15 colours)



COMPOSITION

39% LI, 38% CV, 15% PE,
8% CO

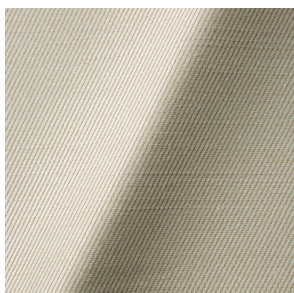
ABRASION

30000 martindale
pilling 4 - 5

FIRETEST

BS5852 part 1 on request
US. Cal. Bull. 117-2013

ORAY RONAN (available in 5 colours)



COMPOSITION

39% LI, 38% CV, 15% PE,
8% CO

ABRASION

30000 martindale
pilling 4 - 5

FIRETEST

BS5852 part 1 on request
US. Cal. Bull. 117-2013

REMIX 2 (available in 49 colours)



COMPOSITION

90% WV, 10% PA

ABRASION

100000 martindale
lightfastness 5
pilling 4

FIRETEST

US. Cal. Bull. 117-2013

SOLIS (available in 9 colours)



COMPOSITION

60% WO, 30% PES, 2%
PA, 3% PC

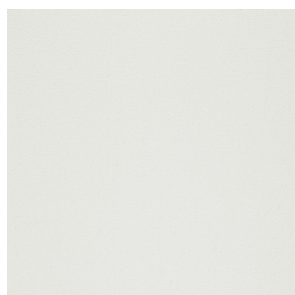
ABRASION

40000 martindale
lightfastness 5
pilling 3 - 4

FIRETEST

BS5852 part 1 on request
US. Cal. Bull. 117-2013

STEELCUT 2 (available in 37 colours)



COMPOSITION

90% WV, 10% PA

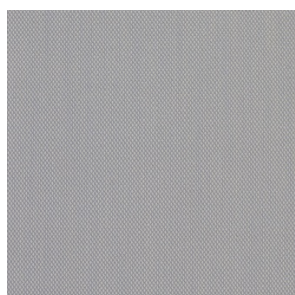
ABRASION

100000 martindale
lightfastness 6
pilling 3 - 4

FIRETEST

US. Cal. Bull. 117-2013

STEELCUT TRIO 3 (available in 54 colours)



COMPOSITION

90% WV, 10% PA

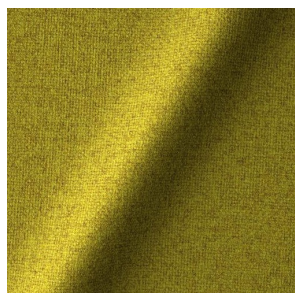
ABRASION

100000 martindale
lightfastness 5
pilling 4

FIRETEST

US. Cal. Bull. 117-2013

TONICA 2 (available in 39 colours)



COMPOSITION

100% WV

ABRASION

45000 martindale
lightfastness 6 - 7
pilling 4 - 5

FIRETEST

US. Cal. Bull. 117-2013

VESPER (available in 8 colours)



COMPOSITION

10% CO, 40% LI, 10% PA,
10% PES, 30% CV

ABRASION

40000 martindale
lightfastness 5
pilling 4

FIRETEST

BS5852 part 1 on request
US. Cal. Bull. 117-2013