

m o o o i

Bart Armchair

MOOOI WORKS



One of the members of the Bart Family collection couldn't quite sit still and developed a look around, comfortably and in style. The roundness of the armchair's design is completed by the circular motion, which also adds another dimension to its coziness and to our freedom of movement. Are you too active or inspired to sit still? Swivel your Bart armchair around & enjoy another point of view!

Detailing



Square angles are tempered and smoothed into the round coziness of curved shapes & features for extra comfort.

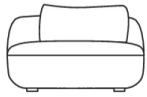
Bart Armchair Basic

Dimensions

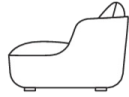
95cm | 37.4"



95cm | 37.4"



42cm | 16.5"



60cm | 23.6"

Product

WIDTH 95cm | 37.4"

HEIGHT 60cm | 23.6"

DEPTH 95cm | 37.4"

Packaging

WIDTH 102cm | 40.2"

HEIGHT 63cm | 24.8"

CUBAGE 0.67m³ | 23.6ft³

LENGTH 104cm | 40.9"

WEIGHT 39cm | 85.98lbs

Technical

MATERIAL

Wooden frame covered in foam and dacron, foam seat.

HEIGHT ARMREST

60cm | 23.6"

SEAT DEPTH

69cm | 27.2"

SEAT HEIGHT

42cm | 16.5"

SEAT WIDTH

82cm | 32.3"

Bart Armchair Canape

Dimensions

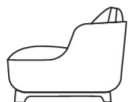
95cm | 37.4"



95cm | 37.4"



47cm | 18.5"



65cm | 25.6"

Product

WIDTH 95cm | 37.4"

HEIGHT 65cm | 25.6"

DEPTH 95cm | 37.4"

Packaging

WIDTH 102cm | 40.2"

HEIGHT 63cm | 24.8"

CUBAGE 0.67m³ | 23.6ft³

LENGTH 104cm | 40.9"

WEIGHT 39cm | 85.98lbs

Technical

MATERIAL

Wooden frame covered in foam and dacron, foam seat.

HEIGHT ARMREST

65cm | 25.6"

SEAT DEPTH

74cm | 29.1"

SEAT HEIGHT
47cm | 18.5"

SEAT WIDTH
82cm | 32.3"

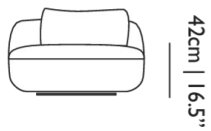
Bart Armchair Swivel

Dimensions

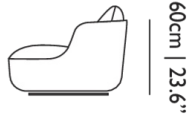
95cm | 37.4"



95cm | 37.4"



42cm | 16.5"



60cm | 23.6"

Product

WIDTH 95cm | 37.4"

HEIGHT 60cm | 23.6"

DEPTH 95cm | 37.4"

Packaging

WIDTH 102cm | 40.2"

HEIGHT 63cm | 24.8"

CUBAGE 0.67m³ | 23.6ft³

LENGTH 104cm | 40.9"

WEIGHT 39cm | 85.98lbs

Technical

MATERIAL

Wooden frame covered in foam and dacron, foam seat.

HEIGHT ARMREST

60cm | 23.6"

SEAT DEPTH

69cm | 27.2"

SEAT HEIGHT

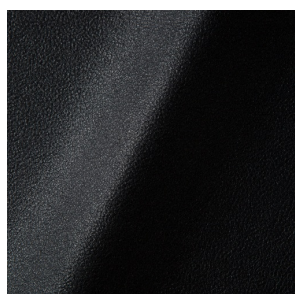
42cm | 16.5"

SEAT WIDTH

82cm | 32.3"

Upholstery

ABBRACCI (available in 5 colours)



COMPOSITION

100% PES

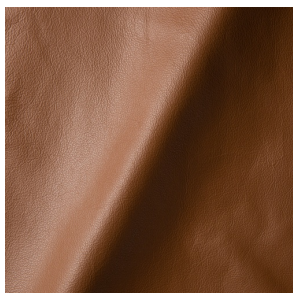
ABRASION

30000 martindale
lightfastness 3 - 4
pilling 5

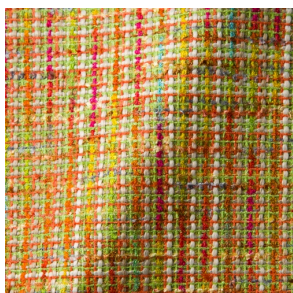
FIRETEST

BS5852 part 1 on request
US. Cal. Bull. 117-2013

ARREDO (available in 2 colours)



BOUCLE (available in 4 colours)



COMPOSITION

43% CO, 14% PA, 12% CV,
3% PES, 28% PAN

ABRASION

20000 martindale
lightfastness 4 - 6
pilling 4 - 5

FIRETEST

BS5852 part 1 on request

BYRAM (available in 19 colours)



COMPOSITION

100% WM

ABRASION

70000 martindale
lightfastness 4 - 5
pilling 4

FIRETEST

BS5852 part 1
US. Cal. Bull. 117-2013

CANVAS 2 (available in 45 colours)



COMPOSITION

90% WO, 10% PA

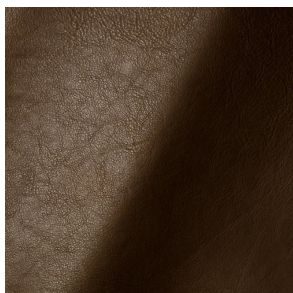
ABRASION

100000 martindale
lightfastness 6
pilling 4

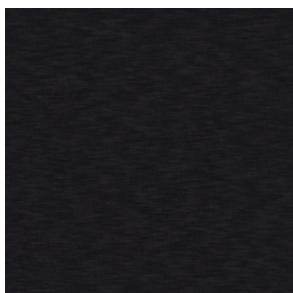
FIRETEST

BS5852 part 1 on request
US. Cal. Bull. 117-2013

CERVINO (available in 4 colours)



DENIM (available in 3 colours)



COMPOSITION

100% CO

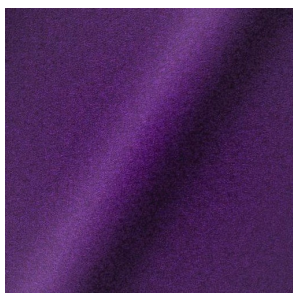
ABRASION

70000 martindale
lightfastness 4
pilling 3 - 4

FIRETEST

BS5852 part 1 on request
US. Cal. Bull. 117-2013

DIVINA 3 (available in 56 colours)



COMPOSITION

100% WO

ABRASION

45000 martindale
lightfastness 7
pilling 3

FIRETEST

BS5852 part 1 on request
US. Cal. Bull. 117-2013

DIVINA MD (available in 27 colours)



COMPOSITION

100% WO

ABRASION

45000 martindale
lightfastness 6
pilling 3

FIRETEST

BS5852 part 1 on request
US. Cal. Bull. 117-2013

DIVINA MELANGE 3 (available in 60 colours)



COMPOSITION

100% WO

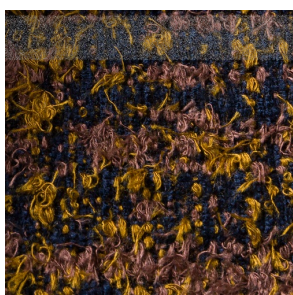
ABRASION

45000 martindale
lightfastness 6 - 7
pilling 3

FIRETEST

BS5852 part 1 on request
US. Cal. Bull. 117-2013

Bearded Leopard (available in 1 colours)



COMPOSITION

77% CV, 15% PES, 7% CO,
1% PA

ABRASION

15000 martindale
lightfastness 4 - 6
pilling 4

FIRETEST

BS5852 part 1 on request
US. Cal. Bull. 117-2013

Bison (available in 1 colours)



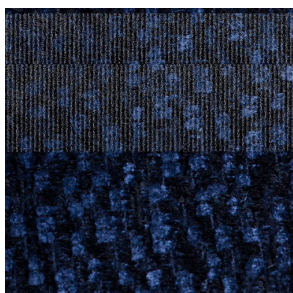
Armoured Boar, Cracked (available in 1 colours)



Armoured Boar, Hairy (available in 1 colours)



Armoured Boar (available in 1 colours)



COMPOSITION

64% CV, 21% PES, 15%
CO

ABRASION

50000 martindale
lightfastness 4 - 6
pilling 5

FIRETEST

BS5852 part 1 on request
US. Cal. Bull. 117-2013

Dodo Pavone (available in 1 colours)



COMPOSITION

12% CO, 88% PES

ABRASION

40000 martindale
lightfastness 5
pilling 4 - 5

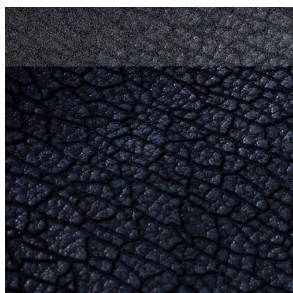
FIRETEST

BS5852 part 1 on request
US. Cal. Bull. 117-2013

Dwarf Rhino Buffed (available in 1 colours)



Dwarf Rhino, Crackle (available in 1 colours)



Blushing Sloth Melange Mohair (available in 1 colours)



COMPOSITION

85% WV, 15% WM

ABRASION

15000 martindale
lightfastness 4 - 6
pilling 2 - 3

FIRETEST

BS5852 part 1 on request
US. Cal. Bull. 117-2013

Blushing Sloth Woolly Mohair (available in 1 colours)



COMPOSITION

24% PES, 15% PA, 8% CO,
24% WM, 29% WV

ABRASION

40000 martindale
lightfastness 4 - 6
pilling 3 - 4

FIRETEST

BS5852 part 1 on request
US. Cal. Bull. 117-2013

FIORD (available in 27 colours)

COMPOSITION

92% WV, 8% PA

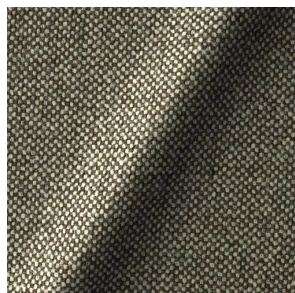
ABRASION

60000 martindale
lightfastness 6
pilling 4 - 5

FIRETEST

BS5852 part 1 on request
US. Cal. Bull. 117-2013

HALLINGDAL 65 (available in 58 colours)



COMPOSITION

30% CV, 70% WV

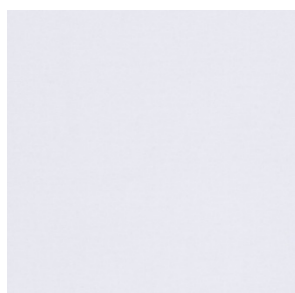
ABRASION

100000 martindale
lightfastness 7
pilling 3 - 4

FIRETEST

BS5852 part 1

HARALD 3 (available in 30 colours)



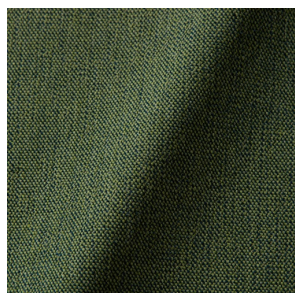
COMPOSITION

100% CO

ABRASION

100000 martindale
lightfastness 5
pilling 4 - 5

JUSTO (available in 10 colours)



COMPOSITION

15% CO, 35% PC, 10% PA,
40% CV

ABRASION

50000 martindale
lightfastness 5
pilling 4

FIRETEST

BS5852 part 1 on request
US. Cal. Bull. 117-2013

LISCIO (available in 11 colours)

COMPOSITION

35% WO, 35% CV, 21%
CO, 9% PA

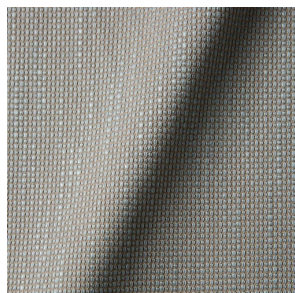
ABRASION

30000 martindale
lightfastness 4 - 6
pilling 4

FIRETEST

BS5852 part 1 on request
US. Cal. Bull. 117-2013

MACCHEDIL GREZZO (available in 10 colours)



COMPOSITION

47% CO, 20% CV, 18%
PA, 8% LI, 5% PC

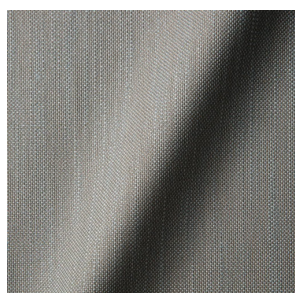
ABRASION

15000 martindale
lightfastness 3 - 5
pilling 4 - 5

FIRETEST

BS5852 part 1 on request

MACCHEDIL SOTTILE (available in 10 colours)



COMPOSITION

49% CV, 24% PES, 21% LI,
6% CO

ABRASION

20000 martindale
lightfastness 3 - 5
pilling 2 - 3

FIRETEST

BS5852 part 1 on request

MERIT (available in 43 colours)

COMPOSITION

24% PES, 76%

ABRASION

85000 martindale
lightfastness 7
pilling 4

MOSAIC 2 (available in 15 colours)

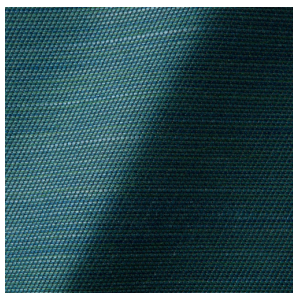
COMPOSITION

58% PES, 27% WV, 9% PA,
6% EA

ABRASION

100000 martindale
lightfastness 6 - 7
pilling 4 - 5

ORAY RAY (available in 15 colours)



COMPOSITION

39% LI, 38% CV, 15% PE,
8% CO

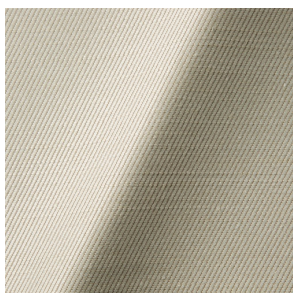
ABRASION

30000 martindale
pilling 4 - 5

FIRETEST

BS5852 part 1 on request
US. Cal. Bull. 117-2013

ORAY RONAN (available in 5 colours)



COMPOSITION

39% LI, 38% CV, 15% PE,
8% CO

ABRASION

30000 martindale
pilling 4 - 5

FIRETEST

BS5852 part 1 on request
US. Cal. Bull. 117-2013

REMIX 2 (available in 49 colours)



COMPOSITION

90% WV, 10% PA

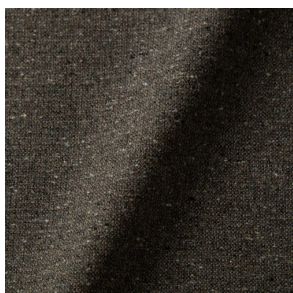
ABRASION

100000 martindale
lightfastness 5
pilling 4

FIRETEST

US. Cal. Bull. 117-2013

SOLIS (available in 9 colours)



COMPOSITION

60% WO, 30% PES, 2%
PA, 3% PC

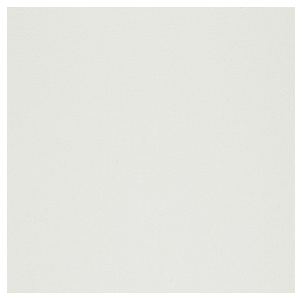
ABRASION

40000 martindale
lightfastness 5
pilling 3 - 4

FIRETEST

BS5852 part 1 on request
US. Cal. Bull. 117-2013

STEELCUT 2 (available in 37 colours)



COMPOSITION

90% WV, 10% PA

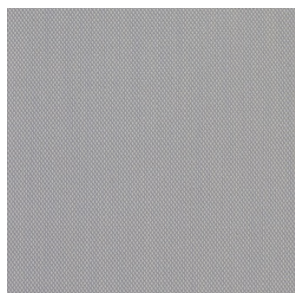
ABRASION

100000 martindale
lightfastness 6
pilling 3 - 4

FIRETEST

US. Cal. Bull. 117-2013

STEELCUT TRIO 3 (available in 54 colours)



COMPOSITION

90% WV, 10% PA

ABRASION

100000 martindale
lightfastness 5
pilling 4

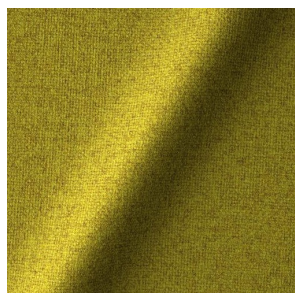
FIRETEST

US. Cal. Bull. 117-2013

SUMMIT MELANGE (available in 8 colours)

SUMMIT UNI (available in 8 colours)

TONICA 2 (available in 39 colours)



COMPOSITION

100% WV

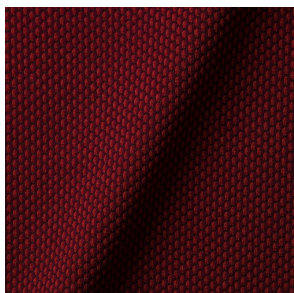
ABRASION

45000 martindale
lightfastness 6 - 7
pilling 4 - 5

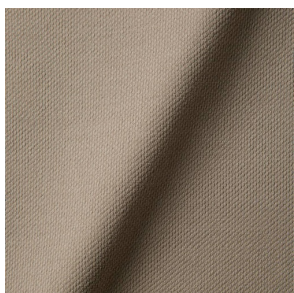
FIRETEST

US. Cal. Bull. 117-2013

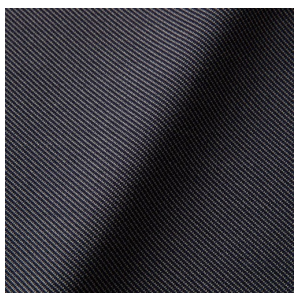
TRICKLE (available in 8 colours)



TWILL (available in 8 colours)



TWILL MELANGE (available in 8 colours)



VELOUR (available in 4 colours)

VESPER (available in 8 colours)



COMPOSITION

10% CO, 40% LI, 10% PA,
10% PES, 30% CV

ABRASION

40000 martindale
lightfastness 5
pilling 4

FIRETEST

BS5852 part 1 on request
US. Cal. Bull. 117-2013

